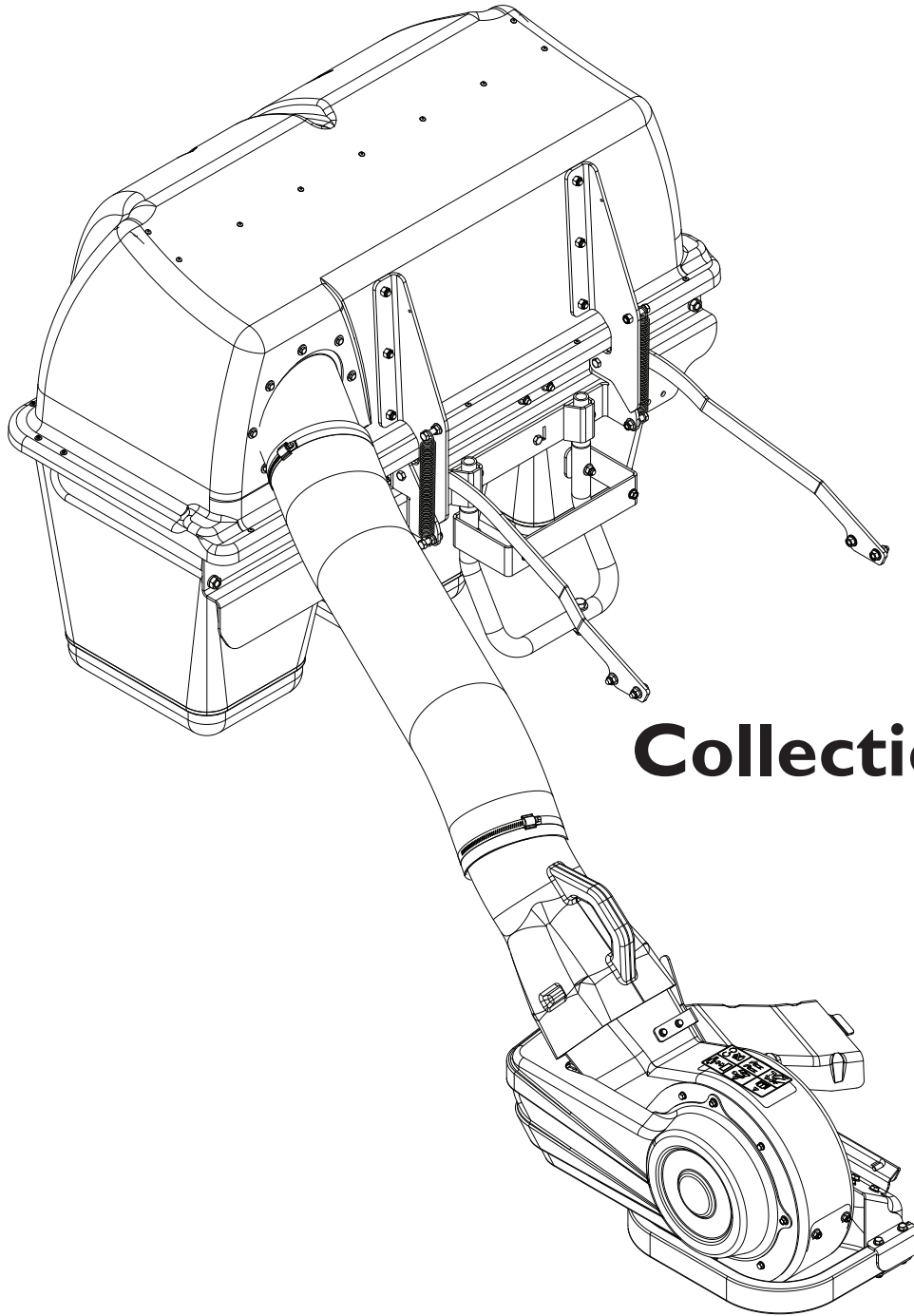


DIXON[®] ZTR[®]

Operator / Parts Manual



Collection System

48" / 966693201

52" / 966693202

61" / 966693203



CAUTION

- **DO NOT** operate mower with grass catcher partially installed.
- Disengage blades and stop engine before leaving mower seat to empty containers, unclogging chutes, etc.
- Close cover before starting.
- Disengage mower blades when crossing driveways or gravel surfaces and other areas where thrown objects could be a hazard.
- **DO NOT** attempt to vacuum cans or other potentially hazardous projectiles.



CAUTION

BEFORE ASSEMBLING GRASS CATCHER TO MOWER

- Set parking brake.
- Place motion control levers in “NEUTRAL” position.
- Turn ignition key “OFF” and remove key.
- Make sure the blades and all moving parts have completely stopped.
- Disconnect spark plug and place wire where it cannot come in contact with plug.

CONTENTS

SAFETY RULES	4
GENERAL OPERATION	4
SLOPE OPERATION	4
CHILDREN.....	5
SERVICE.....	5
ASSEMBLY	6
REPAIR PARTS	
BLOWER ASSEMBLY	10
BAGGER ASSEMBLY	12
DRIVE AND WEIGHTS.....	14
TIPS FOR IMPROVED BAGGING.....	16
GENERAL RECOMMENDATIONS.....	16
STORAGE.....	16

CONGRATULATIONS on the purchase of a new collection system. It has been designed, engineered and manufactured to give the best possible dependability and performance.

Should you experience any problem you cannot easily remedy, please contact your nearest authorized service center/ department. They have competent, well-trained technicians and the proper tools for service and repairs.

Please read and retain this manual. The instructions will enable you to assemble and maintain your collection system properly. Always observe the following SAFETY RULES.

KNOW YOUR BLOWER SYSTEM

READ THIS OPERATION MANUAL AND SAFETY RULES BEFORE ASSEMBLING OR OPERATING YOUR BLOWER SYSTEM. Compare the illustrations with the carton contents to familiarize yourself with the parts before starting the assembly. Study the operating instructions and safety precautions thoroughly to insure proper functioning of your Grass Catcher and to prevent injury to yourself and others. Save this manual for future reference.



WARNING!

Engine exhaust, some of its constituents, and certain vehicle components contain or emit chemicals known to the State of California to cause cancer and birth defects or other reproductive harm.



The operation of any mower can result in foreign objects thrown into the eyes, which can result in severe eye damage. ALWAYS wear safety glasses or eye shields before starting your mower and while mowing. Standard safety glasses are recommended or a wide vision safety mask for over spectacles.

SAFETY RULES



SAFE OPERATION PRACTICES FOR RIDE-ON MOWERS



DANGER!

THIS CUTTING MACHINE IS CAPABLE OF AMPUTATING HANDS AND FEET AND THROWING OBJECTS. FAILURE TO OBSERVE THE FOLLOWING SAFETY INSTRUCTIONS COULD RESULT IN SERIOUS INJURY OR DEATH.

GENERAL OPERATION

- Read, understand and follow all instructions in the manual and on the machine before starting.
- Only allow responsible adults, who are familiar with the instructions, to operate the machine.
- Clear the area of objects such as rocks, stones, toys, wire etc., which could be picked up and thrown by the blades.
- Be sure the area is clear of all people and pets before mowing. Stop the machine if anyone enters the area.
- Never carry passengers or children even with blades off.
- Do not mow in reverse unless absolutely necessary. Always look down and behind before and while backing.
- Be aware of the mower discharge direction and do not direct it towards anyone. Do not operate the mower without either the entire grass catcher or the guard in place.
- Slow down before turning.
- Never leave the machine unattended when the engine is running. Always turn off the blades, set the parking brake, stop the engine and remove the key before leaving the machine.
- Turn off blades when not mowing.
- Stop engine before removing grass catcher or unclogging chute.
- Mow only in daylight or good artificial light.
- Do not operate the machine while under the influence of alcohol or drugs.
- Watch out for traffic when operating near or crossing roadways.
- Use extra care when loading and unloading the machine onto a trailer or truck.
- Data indicates that operators, age 60 years and above, are involved in a large percentage of riding mower-related injuries. These operators should evaluate their ability to operate the riding mower safely enough to protect themselves and others from serious injury.
- **DO NOT** operate mower with grass catcher, unless the front weights are installed.

- Keep machine free of grass, leaves or other debris buildup which can touch hot exhaust/engine parts and burn. Do not allow the mower deck to plow leaves or other debris which can cause buildup to occur. Clean any oil or fuel spillage before operating or storing the machine. Allow machine to cool before storage.

SLOPE OPERATION

Slopes are a major factor related to loss-of-control and tip-over accidents, which can result in severe injury or death. All slopes require extra caution. If you cannot back up the slope or if you feel uneasy on it, do not mow it.

DO

- Mow up and down slopes (10° Max.), not across.
- Remove obstacles such as rocks, tree limbs, etc.
- Watch for holes, ruts, or bumps. Uneven terrain could overturn the machine. **Tall grass can hide obstacles.**
- Use slow speed. Choose a low speed so that you will not have to stop while on the slope.
- Use extra care with grass catchers or other attachments. These can change the stability of the machine.
- Keep all movement on the slopes **slow** and **gradual**. Do not make sudden changes in speed or direction.
- Avoid starting or stopping on a slope. If tires lose traction, disengage the blades and proceed slowly **straight** down the slope.

DO NOT

- **Do not** turn on slopes unless necessary, and then, turn slowly and gradually downhill, if possible.
- **Do not** mow near drop-off, ditches, or embankments. The mower could suddenly turn over if a wheel is over the edge of a cliff or ditch, or if an edge caves in.
- **Do not** mow on wet grass. Reduced traction could cause sliding.
- **Do not** try to stabilize the machine by putting your foot on the ground.

SAFETY RULES



SAFE OPERATION PRACTICES FOR RIDE-ON MOWERS



CHILDREN

Tragic accidents can occur if the operator is not alert to the presence of children. Children are often attracted to the machine and the mowing activity. Never assume that children will remain where you last saw them.

- **NEVER allow children to operate the machine.**
- Keep children out of the mowing area and under the watchful care of another responsible adult.
- Be alert and turn off the machine if children enter the area.
- Before and when backing, look behind and **down** for small children.
- Never carry children. They may fall off and be seriously injured or interfere with safe machine operation.
- Use extra care when approaching blind corners, shrubs, trees, or other objects that may obscure vision.

SERVICE

- The operation of any mower can result in foreign objects thrown into the eyes, which can result in severe eye damage. Always wear safety glasses or eye shields while operating the mower or performing any adjustments or repairs. A wide vision safety mask over spectacles or standard safety glasses are recommended.
- Use extra care in handling gasoline and other fuels. They are flammable and vapors are explosive.
 - Use only an approved container.
 - Never remove gas cap or add fuel with the engine running.
 - Allow engine to cool before refueling.
 - Do not smoke.
 - Never refuel the machine indoors.
 - Never store the machine or fuel container inside where there is an open flame, such as a water heater.
- Never run a machine inside a closed area.
- Keep nuts and bolts, especially blade attachment bolts, tight and keep equipment in good condition.
- Never tamper with safety devices. Check regularly for proper operation.

- Keep machine free of grass, leaves, or other debris buildup. Clean oil or fuel spillage. Allow machine to cool before storing.
- Stop and inspect the equipment if you strike an object. Repair, if necessary, before restarting.
- Never make adjustments or repairs with the engine running.
- Grass catcher components are subject to wear, damage, and deterioration, which could expose moving parts or allow objects to be thrown. Frequently check components and replace with manufacturer's recommended parts, when necessary.
- Mower blades are sharp and can cut. Wrap the blade(s) or wear gloves, and use extra caution when servicing them.
- Check brake operation frequently. Adjust and service as shown in the Operator's Manual.



WARNING!

Battery posts, terminals and related accessories contain lead and lead compounds, chemicals known to the State of California to cause cancer and birth defects or other reproductive harm. Wash hands after handling.



CAUTION

In order to prevent accidental starting when setting up, transporting, adjusting or making repairs, always disconnect spark plug wire and place wire where it cannot contact spark plug.

ASSEMBLY

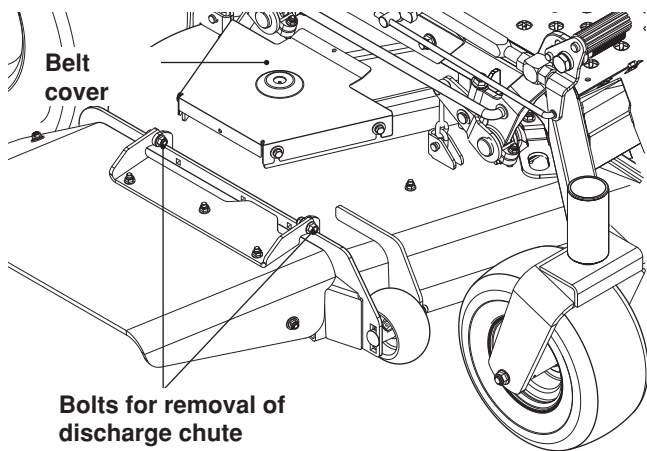
TOOLS REQUIRED

Wrench $\frac{5}{16}$ " (2)	Wrench $1\frac{1}{4}$ " (1)
Wrench $\frac{3}{4}$ " (1)	Wrench $\frac{9}{16}$ " (2)
Wrench $\frac{1}{2}$ " (1)	
Socket $\frac{1}{2}$ "	Socket $1\frac{1}{8}$ "
Screwdriver, standard (1)	
Torque wrench (150 ft/lbs)	
Ratchet with $\frac{1}{2}$ " drive, 6" extension	

NOTE: When right hand (RH) and left hand (LH) are mentioned in this manual, it means when you are seated on the mower in the operator's position.

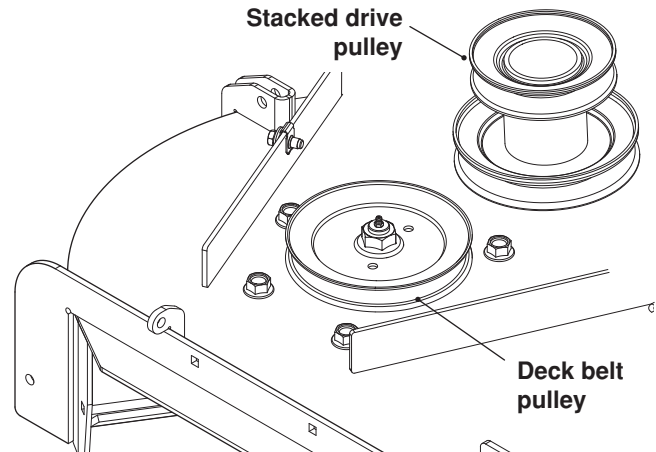
1 INSTALLING DRIVE PULLEY AND DECK STOP TUBES

1. Using two $\frac{9}{16}$ " wrenches, remove the hardware and discharge chute from the deck.
2. Lower deck to the lowest cutting position.
3. With a $\frac{1}{2}$ " wrench, remove the hardware of the right hand (discharge side) belt cover and remove the shield from the deck.

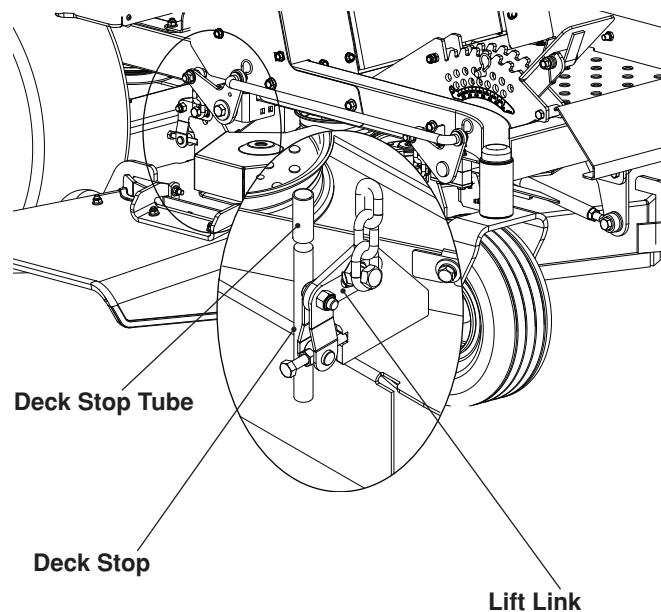


4. Relieve the tension from the deck belt and remove it from the center deck pulley. (See Operator's Manual if necessary)

5. Remove the top nut and the deck belt pulley. Install new stacked drive pulley onto the deck spindle assembly, seating the pulley securely onto the spindle notches. Using a $1\frac{1}{8}$ " and the ratchet with extension, fasten the pulley to the spindle using the original nut. Torque nut to 150 ft/lbs. Retain the original pulley for reuse when not using the collection system.
6. Reinstall the deck belt.



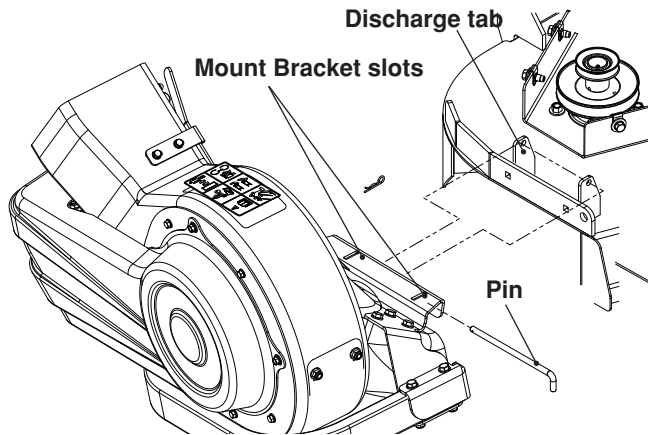
7. Locate the deck stop behind the rear lift link on each side of the deck.
8. Set deck stop tube on the deck stop on each side.



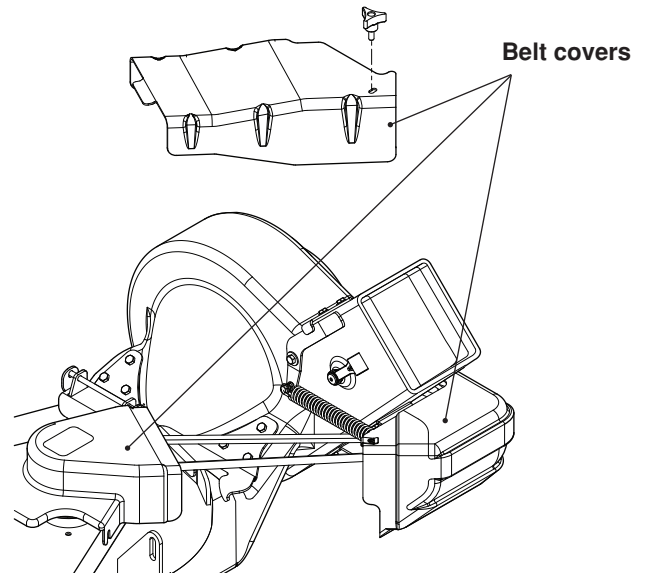
ASSEMBLY

2 MOUNTING BLOWER ASSEMBLY

1. Position the discharge tabs on the deck into the blower mount bracket slots and set blower onto the deck.
2. The blower should sit flush against the outside of the deck.
3. Secure the mount bracket to the deck with the pin and hairpin cotter supplied with the kit.

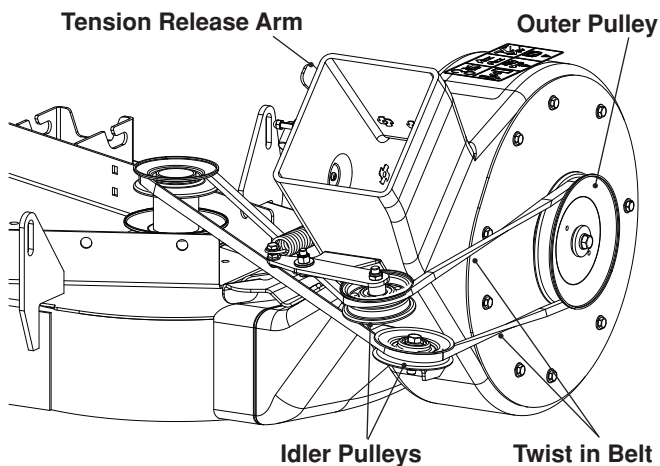


5. Attach the belt shields from the collection kit onto the deck and blower housing.
6. Replace the blower belt cover removed in Step 1.



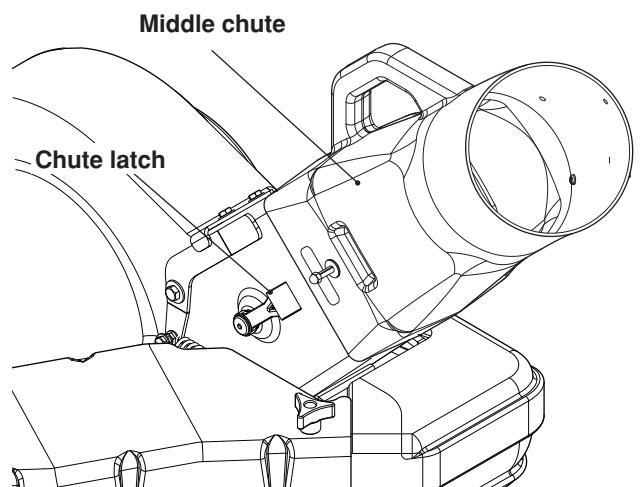
3 INSTALLING DRIVE BELT

1. Remove the blower belt cover to access the pulleys.
2. Move the tension release lever to the forward (disengaged) position.
3. Place the belt over the top pulley of the new stacked deck pulley and refer to the illustration to complete the installation of the drive belt. The belt should have a twist in both sides coming off the outer pulley.
4. Move the tension release arm to the rear and engage it into the latch.



4 INSTALLING MIDDLE CHUTE

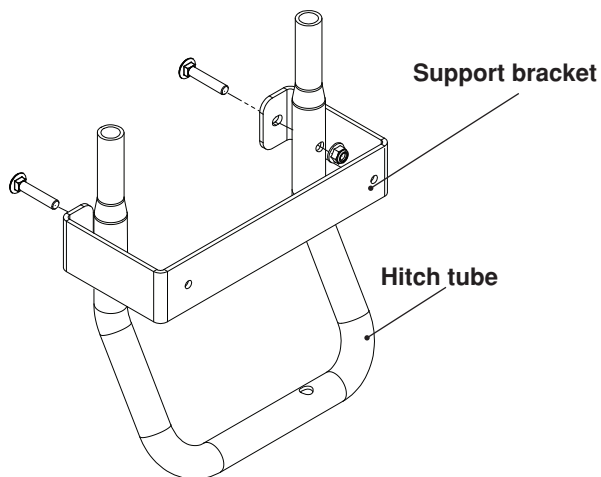
1. Place middle chute over the top end of the blower assembly and latch the chute to the blower assembly.



ASSEMBLY

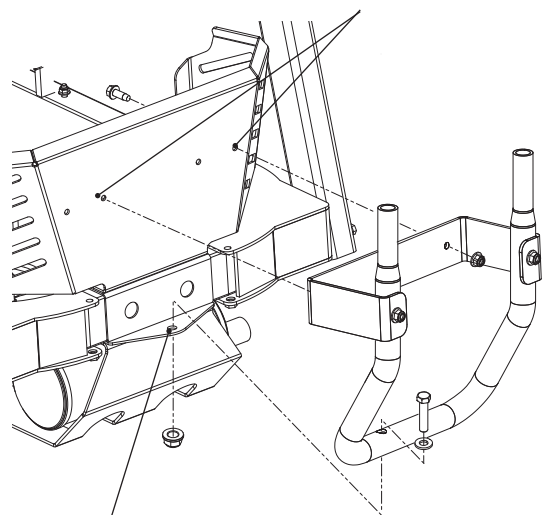
5 BAGGER ASSEMBLY

1. Attach hitch tube to support bracket with $\frac{3}{8}$ -16 x 2 shoulder bolts and secure with flange nuts.



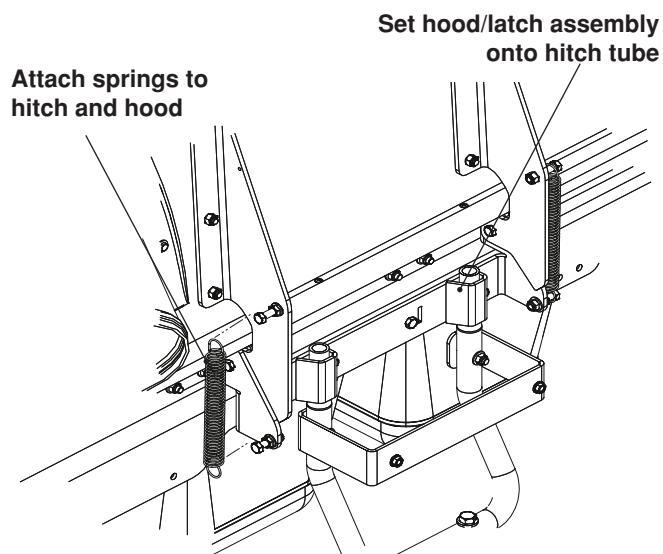
2. Place the support bracket against the frame rear guard. Using the outer right hole and inner left hole, secure with $\frac{5}{16}$ x 1 bolts and $\frac{5}{16}$ nyloc nuts.
3. Attach support tube to frame hitch with $\frac{1}{2}$ x $2\frac{1}{4}$ bolt and $\frac{1}{2}$ nyloc nut.

Support bracket holes

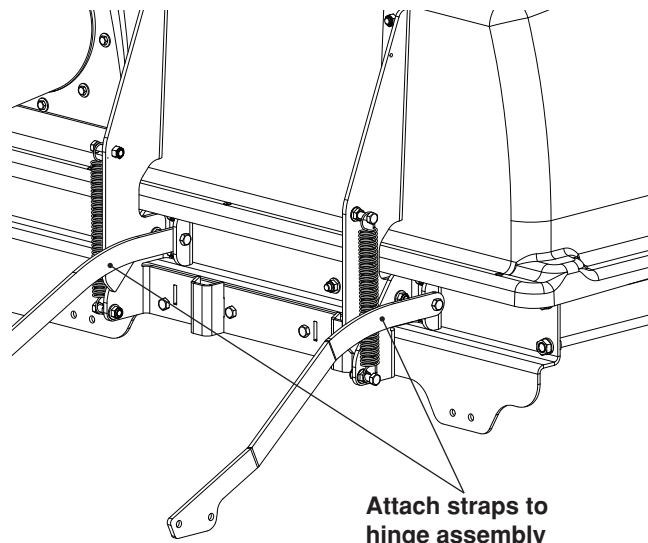


Attach hitch tube to frame

4. Place the hood / hitch assembly onto the hitch tube.
5. Open the hood and secure the (2) springs to the bolts on the hood assembly and the hitch assembly.



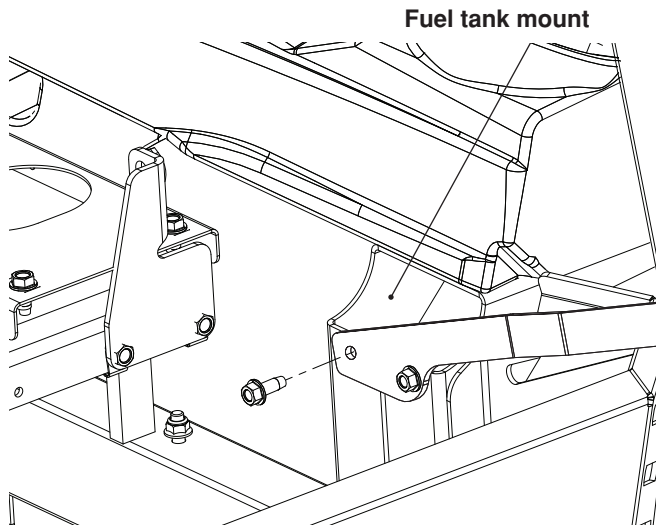
6. Attach right and left straps to the hood/latch assembly with $\frac{3}{8}$ -16 x 1 bolts and flange nuts.



Attach straps to hinge assembly

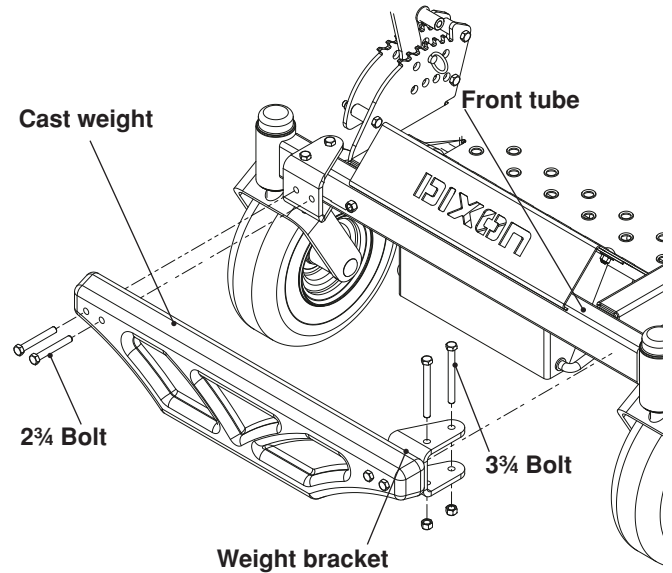
ASSEMBLY

- Secure inner end of straps to unit fuel tank mounts with $\frac{3}{8}$ "-16 x 1 thread forming bolts and flange nuts, as shown.

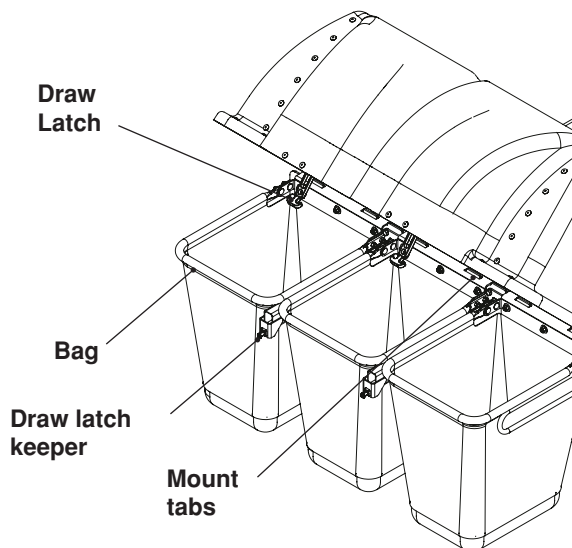


6 INSTALLING WEIGHT

- Bolt cast weight and two weight brackets together using $2\frac{3}{4}$ " bolts and nuts.
- Slide both weight brackets over the front tube on the frame, positioning the assembly in the center of the frame.
- Secure with $3\frac{3}{4}$ " bolts and nuts.

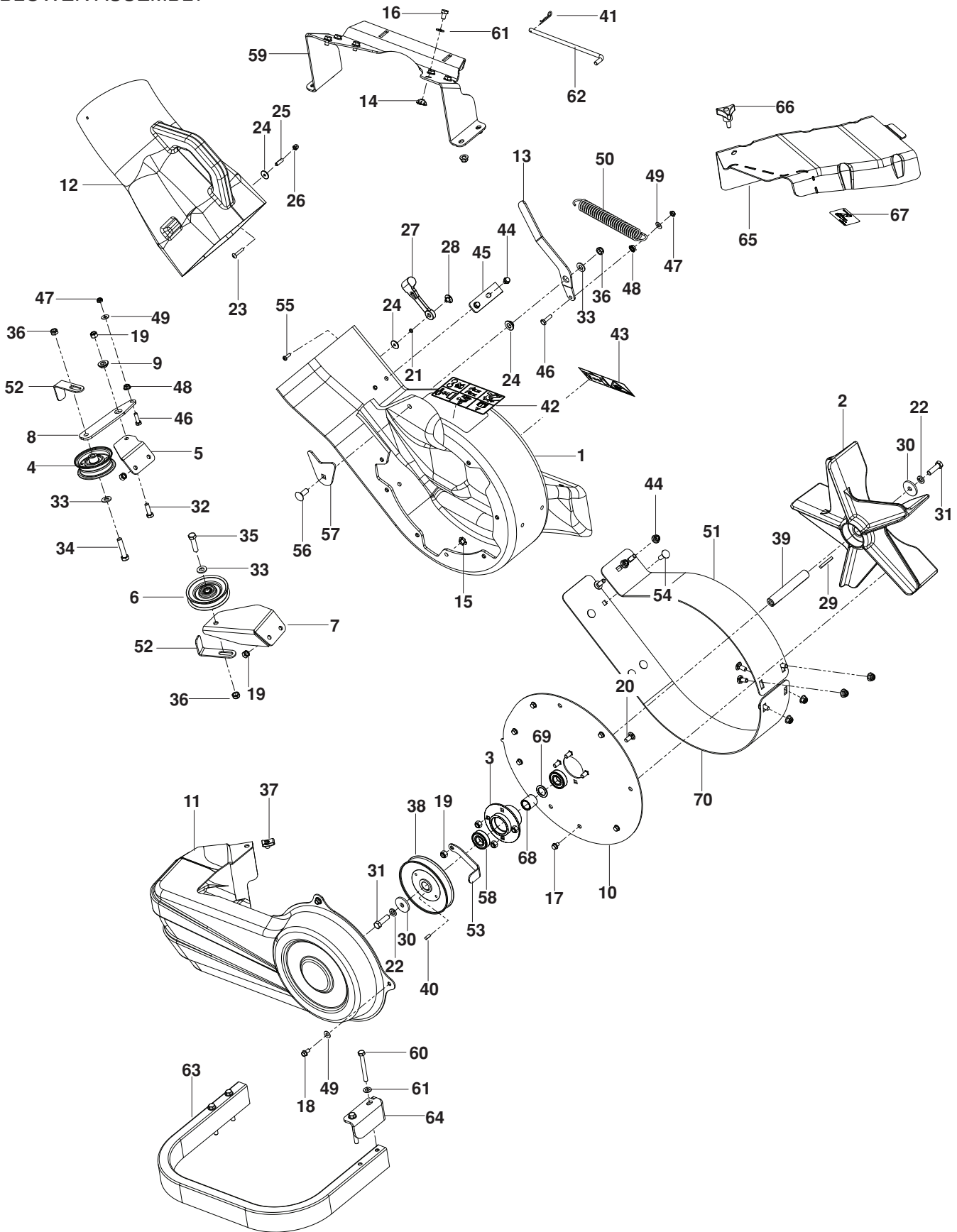


- With the hood open, secure the (3) bags in place. The back of the bags will hook over the mounting tabs on the hitch assembly.
- Close the hood, and lock the draw latch over the draw latch keeper on the hitch assembly.



REPAIR PARTS

BLOWER ASSEMBLY



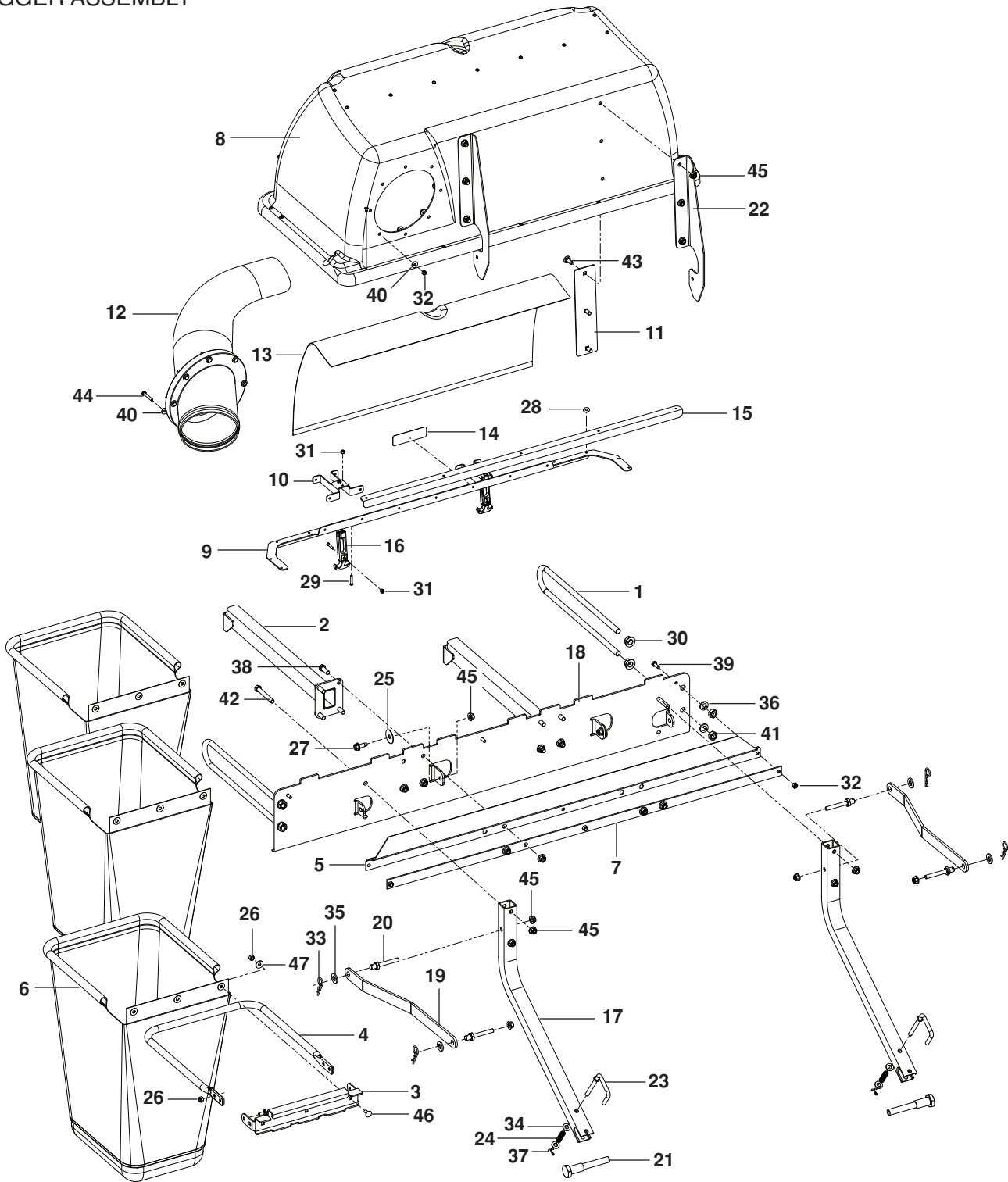
REPAIR PARTS

ITEM	PART NO.	QTY.	DESCRIPTION	ITEM	PART NO.	QTY.	DESCRIPTION
1..	539 130344.....	1	..HOUSING w/DECALS	36..	539 200282.....	3	..NUT 3/8-16 HEX JAM NYLOC
2..	539 130292.....	1	..IMPELLER	37..	539 104763.....	1	..RETAINER, U TYPE
3..	539 130295.....	1	..HUB	38..	539 130324.....	1	..PULLEY
4..	539 919078.....	1	..PULLEY, IDLER	39..	539 130316.....	1	..SHAFT, IMPELLER
5..	539 130335.....	1	..MOUNT, IDLER, UPPER	40..	539 115667.....	1	..KEY 3/16 x 1/2
6..	539 113683.....	1	..V-IDLER	41..	539 976988.....	1	..HAIRPIN COTTER
7..	539 130336.....	1	..MOUNT, IDLER, LOWER	42..	539 105785.....	1	..DECAL, WARNING
8..	539 130337.....	1	..ARM, IDLER	43..	539 106741.....	1	..DECAL, SEVERING
9..	539 130301.....	2	..BUSHING	44..	539 112899.....	10	..NUT 5/16-18 HEX FLG NYLOC
10..	539 130341.....	1	..PLATE, OUTER	45..	539 130346.....	1	..KEEPER
11..	539 130293.....	1	..COVER, BELT	46..	539 990643.....	2	..HCS 1/4-20 x 7/8
12..	522 909301.....	1	..CHUTE, MIDDLE	47..	539 108120.....	2	..NUT 1/4-20 HEX THIN NYLOC
13..	539 130338.....	1	..ARM, TENSION	48..	539 108735.....	2	..NUT 1/4-20 HEX FLANGE LK
14..	539 130313.....	6	..NUT 5/16-18 TEE	49..	539 990055.....	5	..WASHER 1/4 FLAT SAE
15..	539 130314.....	11	..NUT 1/4-20 TEE	50..	539 101977.....	1	..SPRING, TRACTION
16..	539 130315.....	6	..HCS 5/16-18 x 1/2	51..	525 618302.....	1	..LINER, SAND, TOP
17..	539 990302.....	8	..SCREW 1/4-20 x 3/8 THD FRM	52..	539 131087.....	2	..KEEPER, BELT, REAR
18..	539 108461.....	3	..BOLT 1/4-20 x 1/2 HWST	53..	539 131085.....	1	..KEEPER, BELT, OUTER
19..	539 990717.....	9	..NUT 5/16-18 HEX NYLOC	54..	539 990208.....	6	..RHSNB 5/16-18 x 1
20..	539 990316.....	6	..RHSNB 5/16-18 x 3/4	55..	539 976952.....	1	..SCREW #10-24 x .625 MACH
21..	539 109552.....	1	..WASHER 3/16 SLW	56..	539 990645.....	1	..RHSNB 3/8-16 x 1
22..	539 990118.....	2	..WASHER 3/8 SLW	57..	539 132124.....	1	..PLATE, BACKING
23..	539 108083.....	1	..SCREW, #10- 24 x 1 1/8	58..	539 130296.....	2	..BEARING
24..	539 108084.....	2	..WASHER 3/16 x 3/4 x 16 GA	59..	522 909602.....	1	..BRACKET, MOUNT
25..	539 108085.....	1	..SPACER, SPLIT	60..	539 101721.....	4	..HCS 5/16-18 x 2 3/4
26..	539 108086.....	1	..NUT, ACORN #10- 24	61..	539 990188.....	10	..WASHER 5/16 SAE FLAT
27..	539 108088.....	1	..LATCH, HOOD	62..	522 909801.....	1	..PIN, RETENTION
28..	539 108089.....	1	..NUT, PLATED	63..	522 909402.....	1	..TUBE, RUB
29..	539 125229.....	1	..KEY 1 1/2	64..	522 909502.....	1	..BRACKET, RETENTION
30..	539 110323.....	2	..WASHER, HARDENED	65..	539 130309.....	1	..COVER, BELT
31..	539 110321.....	2	..BOLT 3/8-24 x 1 1/4 HEX GR 8	66..	539 104411.....	1	..KNOB w/ STUD
32..	539 990209.....	1	..HCS 5/16-18 x 1	67..	539 130349.....	1	..DECAL, BELT ROUTING
33..	539 990122.....	3	..WASHER 3/8 SAE FLT	68..	539 130323.....	1	..SPACER
34..	539 976949.....	1	..HCS 3/8-16 x 1 3/4	69..	539 910935.....	1	..WASHER 3/4 FLAT
35..	539 990655.....	1	..HCS 3/8-16 x 1 1/2	70..	522 909702.....	1	..SAND LINER, BOTTOM

NOTE: ALL FASTENERS ARE GRADE 5 UNLESS OTHERWISE SPECIFIED.

REPAIR PARTS

BAGGER ASSEMBLY



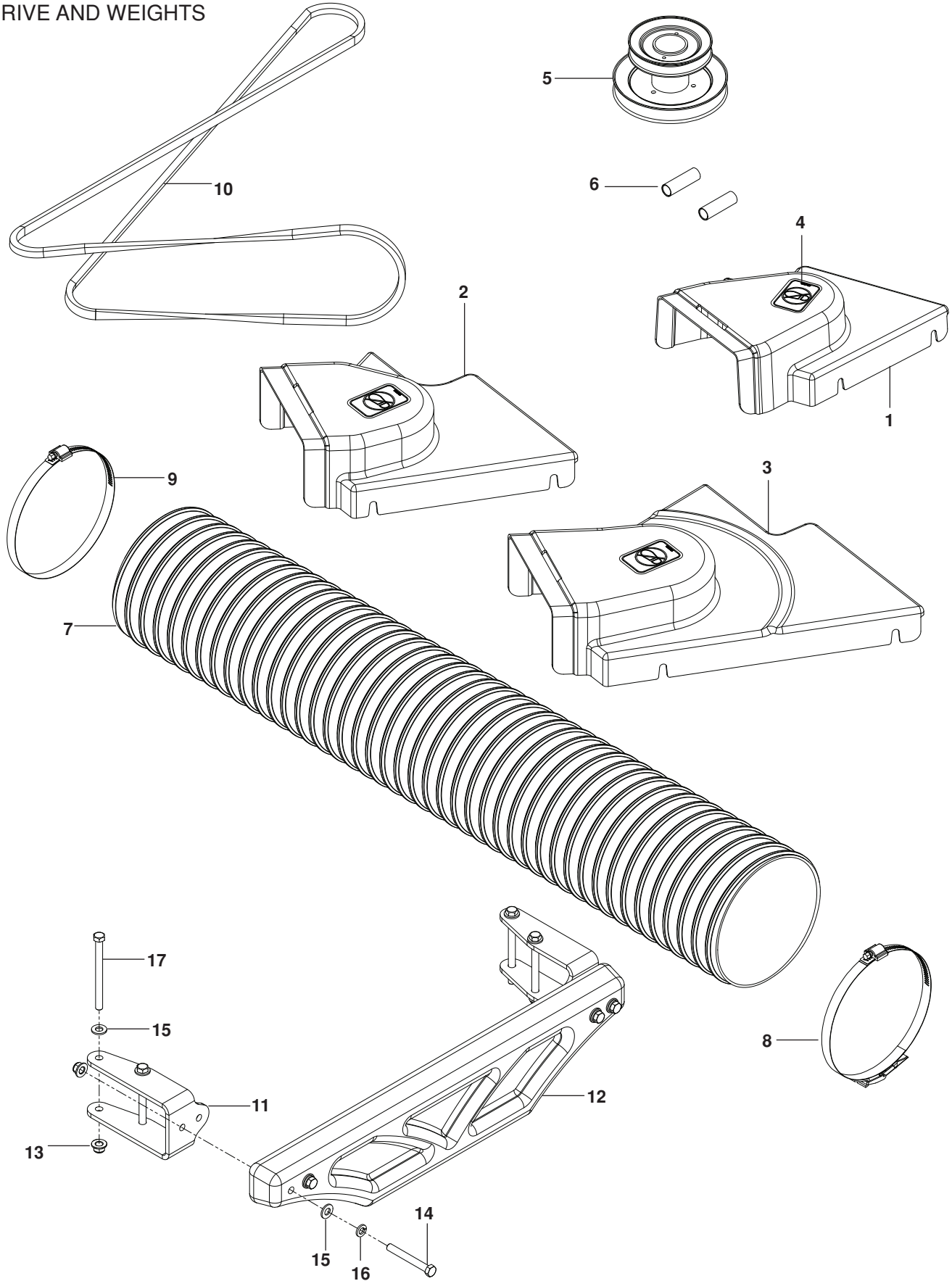
REPAIR PARTS

ITEM	PART NO.	QTY.	DESCRIPTION	ITEM	PART NO.	QTY.	DESCRIPTION
1..	539 111158.....	2	SUPPORT, OUTER	25..	539 102998.....	2	FRICTION WASHER
2..	539 111162.....	2	ARM, SUPPORT	26..	539 990717....	21	NUT ⁵ / ₁₆ -18 NYLOC
3..	575 467702.....	3	HANGER, BAG	27..	539 107476.....	2	BOLT ³ / ₈ -16 x 1 THD FRM
4..	539 111166.....	3	TUBE, BAG FRAME	28..	539 110033.....	8	WASHER #10 MACH SCR
5..	539 111167.....	1	SEAL, RUBBER	29..	539 111186.....	6	SCREW #10-24 x 1 ¹ / ₈ MACH
6..	539 111300.....	3	BAG, SMALL	30..	539 111187.....	4	NUT ¹ / ₂ -13 HEX WHIZLK
7..	539 111171.....	1	SEAL STRAP	31..	539 976977.....	6	NUT #10-24 HEX NYLOC
8..	539 111172.....	1	HOOD	32..	539 976978....	11	NUT ¹ / ₄ -20 HEX NYLOC
9..	539 111174.....	1	SUPPORT, HOOD	33..	539 976989.....	5	HAIRPIN
10..	539 111175.....	2	SUPPORT, DRAW LATCH	34..	539 990122.....	4	WASHER ³ / ₈ SAE FLT
11..	539 111181.....	2	PLATE, HOOD MOUNT	35..	539 990250.....	4	WASHER
12..	539 111182.....	1	INLET TUBE	36..	539 990254.....	4	WASHER ¹ / ₂ SLW
13..	539 111183.....	1	MESH, POLY DIAMOND	37..	539 990365.....	2	PIN, COTTER ¹ / ₈ x ³ / ₄
14..	539 111260.....	1	DECAL, VENTILATION	38..	539 990563.....	8	HCS ³ / ₈ -16 x 1
15..	575 486802.....	1	HOOD SUPPORT, REAR	39..	539 990580.....	3	HCS ¹ / ₄ -20 x ³ / ₄
16..	539 200478.....	2	DRAW LATCH	40..	539 990598....	16	WASHER ¹ / ₄ FLAT
17..	525 444502.....	2	TUBE, HITCH	41..	539 990625.....	4	NUT ¹ / ₂ -13 HEX JAM
18..	525 444702.....	1	PLATE, HITCH MOUNT	42..	539 990629.....	4	HCS ³ / ₈ -16 x 2 ¹ / ₄
19..	525 444902.....	2	STRAP	43..	539 990645.....	6	RHSNB ³ / ₈ -16 x 1
20..	525 445001.....	4	PIN, MOUNT	44..	539 991003.....	8	HCS ¹ / ₄ -20 x 1 ³ / ₄
21..	525 445301.....	2	BOLT, PIVOT	45..	521 996501....	24	NUT ³ / ₈ -16 HEX FLG NYLOC
22..	525 445402.....	2	BRACKET, HINGE	46..	539 990316....	21	RHSNB ⁵ / ₁₆ -18 x ³ / ₄
23..	525 815901.....	2	PIN, RETENTION	47..	539 990692.....	9	WASHER ⁵ / ₁₆ FLAT
24..	525 816001.....	2	SPRING, COMPRESSION				

NOTE: ALL FASTENERS ARE GRADE 5 UNLESS OTHERWISE SPECIFIED.

REPAIR PARTS

DRIVE AND WEIGHTS



REPAIR PARTS

ITEM	PART NO.	QTY.	DESCRIPTION	ITEM	PART NO.	QTY.	DESCRIPTION
1..	539 130306.....	1	..SHIELD 48" LOWER	9..	539 097076.....	1	..CLAMP, HOSE
2..	539 130307.....	1	..SHIELD 52" LOWER	10..	539 130347.....	1	..DRIVE BELT 48", 52"
3..	539 130308.....	1	..SHIELD 61" LOWER		522 130348.....	1	..DRIVE BELT 61"
4..	539 105743.....	1	..DECAL, NO STEP	11..	522 989002.....	1	..BRACKET, WEIGHT
5..	576 747001.....	1	..STACK PULLEY 48"	12..	539 111587.....	1	..WEIGHT, CAST
	522 909901.....	1	..STACK PULLEY 52"	13..	521 996501.....	8	..NUT ³ / ₈ -16 HEX FLG NYLOC
	522 910001.....	1	..STACK PULLEY 61"	14..	539 101341.....	4	..HCS ³ / ₈ -16 x 3
6..	523 351701.....	2	..TUBE, DECK STOP	15..	539 990122.....	8	..WASHER ³ / ₈ SAE FLAT
7..	523 000201.....	2	..HOSE	16..	539 990118.....	4	..WASHER ³ / ₈ SLW
8..	539 109901.....	1	..CLAMP, HOSE	17..	539 102334.....	4	..HCS ³ / ₈ -16 x 4 ¹ / ₂

TIPS FOR IMPROVED BAGGING

- Follow the mower operation instructions in the Operator Manual.
- When using the grass catcher on a lawn where grass and leaf bagging equipment has not been used previously, thatch and debris that has accumulated for long periods of time is picked up. The amount collected and the total time of operation may be greater than will be experienced with regular use of the grass catcher.
- Always run throttle at full speed when bagging.
- Select a speed low enough to give good mower cutting performance, good quality cut and good bagging performance.

NOTE: *It may be necessary to overlap width of cut to suit your conditions.*

- If grass is extremely tall, it should be mowed twice. The first cut should be at one of the highest settings, the second time to desired height.
- Use the left hand side of mower for trimming.
- Frequently clean the hood debris screen. (Located inside the rear of the hood). A clogged screen results in poor ventilation and may cause plugging.
- Avoid cutting wet grass or in the morning while the dew is still heavy. Grass clippings collected under these conditions tend to be sticky and adhere to the walls of the flow path causing clogging.
- If the grass catcher fails to pick up cut grass or leaves, it is an indication that clogging has occurred in the system or that the grass catcher containers are full.
 - a. Disengage blades, place motion control levers in neutral position.
 - Unlatch and raise cover.
 - Slide out containers and dispose of clippings.
 - Replace containers, close cover, and latch.
 - b. Unlatch chutes and check for clogging.
 - Remove all debris in chute.
 - Reassemble and latch chutes.

GENERAL RECOMMENDATIONS

Always observe safety rules when performing any maintenance.

- Before each use check for loose fasteners.
- Clean unit thoroughly after each use.

BLADE CARE

- For best results mower blades must be kept sharp. Replace bent or damaged blades.
- See instructions in the mower operator's manual.

STORAGE

When grass catcher is to be stored for a period of time, clean it thoroughly, remove all dirt, grass, leaves, etc. Store in a clean, dry place.



CAUTION

Do not leave grass in bagger containers. Empty containers after each use and before storing. Failure to do so may result in spontaneous combustion which could develop into a fire.



CAUTION

Grass catcher components are subject to wear, damage and deterioration, which could expose moving parts or allow objects to be thrown. Frequently check components and replace with manufacturer's recommended parts, when necessary.